

S V's
Delux Flats

Girish
RESIDENCY



... your destination for good living

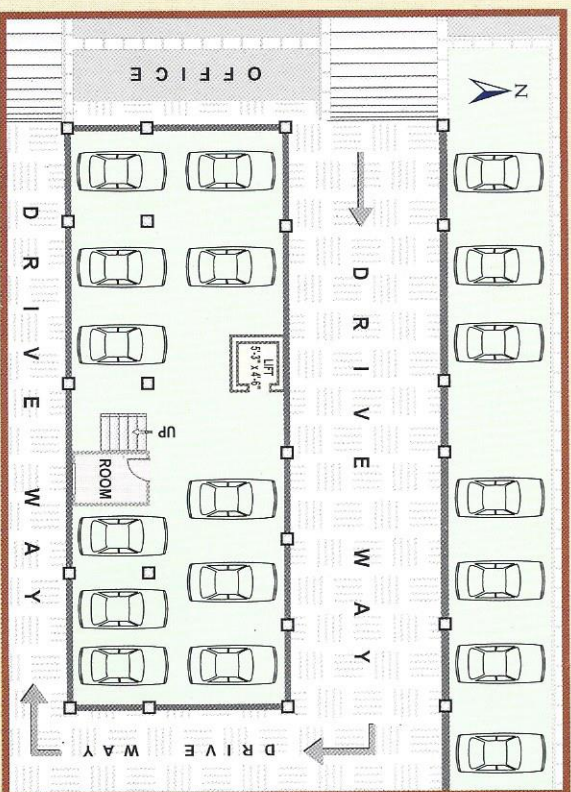
The name guarantees life-long comfort

Come to the most happening spot in the twin cities. KPHB - a location where the future of the twin cities of Hyderabad and Secunderabad are destined for big happenings. You will be in the company of the elite families. With the four-lane expressway fast nearing completion, the place is bound to see a lot of things happening. It will be a virtual windfall for real estate with appreciation doubling by the year. It's a city-within-city with schools, colleges, hospitals, shopping complexes, marketing places and places of recreation and entertainment available just a stones throw away. Greenery dots the entire stretch of the landscape that assures you a relaxed life-style away from the claustrophobic concrete of the city center.

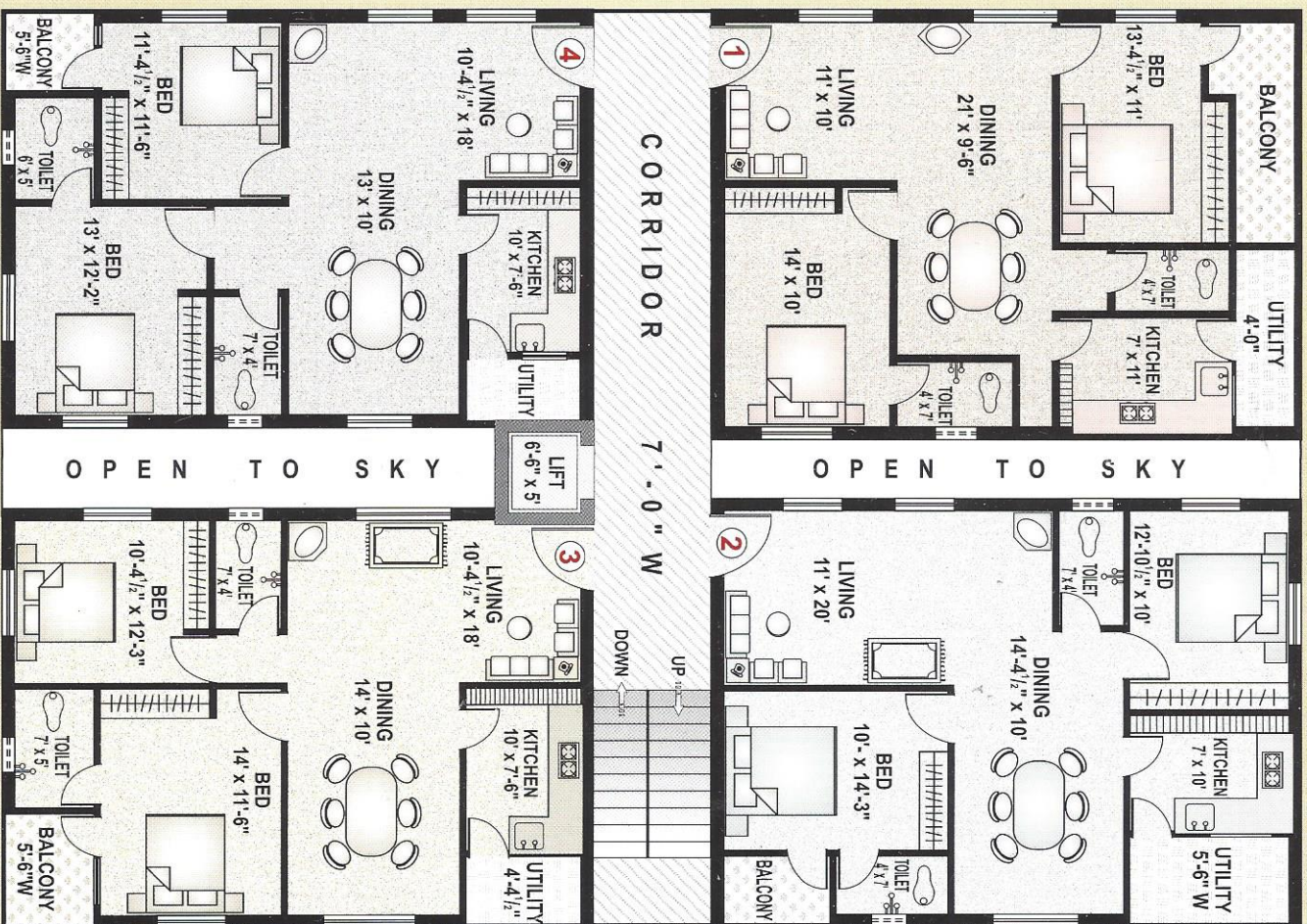
People who are qualified and experienced are constructing **GIRISH RESIDENCY** with the state-of-art aesthetic know-how. Every flat in **GIRISH RESIDENCY** has the feeling of an independent house with round the clock water supply, concealed electrical wiring with 3-phase power with sockets for TV & telephone, lift with generator, teak wood door and window frames, lappam wall finish, polished marble flooring, granite platform in the kitchen including exquisite ceramic flooring in the bathroom and an aesthetically designed elevation that is sure to enhance your stature. It will be a residency as distinct as your signature. And you couldn't ask more for the value of your money.



STILT PLAN



TYPICAL FLOOR PLAN



AREAS	
Flat Nos.	TBUA (Sft.)
1	1115
2	1115
3	1095
4	1095

Architects

SANGEETA & ASSOCIATES

GVS Towers, Hyderabad.

Phone : 6615438

Specifications

Structure	R.C.C. framed structure with brick walls and cement mortar.
Flooring	Marble flooring and skirting in all rooms.
Doors	Main Door - Teak wood frame with teak shutter — Other Doors - Teak wood frame with lamination shutters.
Windows	Teak wood frames with glazed shutters and standard design of grills.
Kitchen	Polished Granite platform and sink, Ceramic tiles upto 2' height above the cooking platform.
Toilets	Glazed tile Dado upto 6' height with standard sanitary ware of white colour.
Plastering	Lappam finish inside the Flat.
Electrical	Concealed copper wiring with 3 phase electric supply.
Painting	Oil bound distemper for interiors and cement based paint for exteriors.
Water	Abundant water supply through overhead tank.
Lift	Passenger lift of 6 persons capacity.
Generator	For lift and common area lighting.

Note : The Promoters reserve the right to make additions, alterations and changes in specifications as required from time to time.

LOCATION MAP



SV's CONSTRUCTIONS

BUILDERS AND DEVELOPERS

Pent House, Srinivasa Sadan Apts.
Behind Padmavathi Plaza
Bhagyanagar, KPHB Colony
Hyderabad - 500 072.

Tel. (Off) : 3055504 (Res) : 3061820
Cell : 98480 43248